



ROCK SOLID

OCTOBER 2022 MONTHLY BULLETIN

A non-profit 501(c)3 group founded in March 1956, organized to educate the general public and members' knowledge of Mineralogy, Gems, Jewelry Making, Fossils and related earth sciences.

MEETINGS: The meetings are the first Thursday of each month except June, July, August and December. The Clubs annual holiday party is in December and the annual picnic is in June which includes a silent auction. Visitors are always welcome.

The meetings are at Hope Chapel (formerly Indian Creek Community Church), 12480 Black Bob Road in Olathe, Kansas. Meeting times are from **6:45 to 8:45** and we must be out of the building by 9:00. We meet on the lower level in room **018**. 6:45 to 7 PM is not structured, as member's fellowship and have a raffle. At the end of the raffle anyone who purchased tickets - and did not win anything - can go take one item from the table. The meeting starts at 7 PM followed by the guest speaker. Information is available at our website: olathegemclub.org

DUES: \$10.00 per year for individuals / \$5.00 per year for minors / children under the age of 12 are free. (Due by May meeting, and delinquent by September meeting)

OFFICERS and CHAIRPERSONS 2021 – 2022:

President: Norman Onnen (816)645-1333

Vice President: Vacant

Secretary: Alison Betts (913)962-9584

Treasurer: Barbara Crompton (913)492-6783

Website and Editor: Dan McDaniel (913)963-5357

Membership Chairman: Leslie Hartman (785)380-6016

Field Trip Coordinator: Leslie Hartman (785)380-6016

Field Trip Assistant: Larry Wells (913)787-5138

Programs: Vacant

Librarian and Historian: Norman Onnen (816)645-1333

Gem Show Chairman: Norman Onnen

Raffle: Lisa Hulbert

Association Delegates: Chet McLaughlin & Mandy Lorenz

Alternate Assoc. Delegates: Larry Wells

PRESIDENTS MESSAGE:

Welcome back rockhounds, collectors, jewelers, etc. It's been a long and very, very hot/dry summer (which has passed by way to quickly). But, now fall is upon us and we eagerly focus on our respective hobbies once more (especially now that COVID is not the impact it has been over the past two plus years). Our club has survived and actually grown over the past few months, and we look forward to the re-start of monthly meetings and activities after this June-Aug recess.

Looking forward, our Thursday Oct 6 OGMS club meeting, will feature a presentation by Dr. Rolfe D. Mandel, the immediate past Director of the Kansas Geological Survey. His much anticipated (and delayed from May, 2022) presentation is entitled "Search for Evidence of the First People in the Americas: Geoarchaeological Perspective". (See his bio below).

Next, WE WILL NOT have a regular Thursday evening, Nov. 3 club meeting, this due our involvement and participation in the NOV. 4-6, 2022 Shows of Integrity Gem and Mineral Show at the KCI Expo Center. So in lieu of the Nov. 3 meeting, this year we will have our Holiday Party on Thursday evening, Nov. 17. Unlike previous years (where we held this event at the Olathe Hy Vee), this year we will party in the large area at the base of the stairs in Hope Chapel (instead of in room 018). (See details of this party below).

As the party is being moved from Dec. (when we have held it in the past), and since Dec. is always a very busy time for our families, friends, etc., we will not hold a club meeting in Dec. Instead, our next regular meetings will resume the first Thursday of Jan. 2023. For your calendars those next meetings will be Jan. 5; Feb. 2; Mar. 2; Apr. 6; and May 4, 2023.

For new members, guests and visitors, the Olathe Gem and Mineral Society (OGMS) club meets from 6:45 - 8:45 PM on the first Thursday evening of Jan. - May and Sept. - Dec. at Hope Chapel, 12480 Black Bob Road, Olathe, KS. (Our club meetings are recessed June - Aug.). Other activities during the year include a June picnic, a fall/winter holiday party, several field trips, and the March Gem and Mineral Show. (The March show is organized and accomplished by the Association of Greater Kansas City Earth Science Clubs - - of which OGMS is a functioning member, along with 6 other area organizations). OGMS is also a member of the Rocky Mountain Federation of Mineralogical Societies (comprised of 86 regional clubs), which in turn is a member of the parent American Federation of Mineralogical Societies (comprised of the 7 regional societies).

Dr. Rolfe D. Mandel (the following bio is assembled/gleaned from Wikipedia and other sources)

Dr. Mandel was born and raised in San Antonio, TX, gained, with honors, a degree in physical geography from the U. of Texas, Austin (1975), and then attended the U. of Kansas where he was awarded his M.A. and PhD in 1991. His early focus as a geographer was land use and natural resource planning, which gradually shifted to paleoenvironments and archeology. Early activities included research of paleosols in Texas and Holocene landscape evolution in SW Kansas. Except for one year (between his B. S. and M. A. degrees) in Texas, and 4 years as an assistant professor at the U. of Nebraska Omaha, he has been

associated at the U, of Kansas. His most recent titles include Distinguished Professor of Archaeology in the Dept. of Anthropology as well as Senior Scientist and Executive Director of the Odyssey Geoarchaeological Research Program at the Kansas Geological Survey. (He is also the immediate past Director of the Kansas Geological Survey).

Initially trained as a geographer, he has been a major figure in defining the subdiscipline of geoarchaeology and has spent the last thirty years focusing on the effects of geologic processes on the archaeological record. His primary research interests include geoarchaeology, Quaternary soils, geology, paleoecology, and paleoenvironmental reconstruction in the Great Plains region of the United States as well as the Mediterranean. He has worked as a consulting geomorphologist on a number of archaeological projects including 'Ain Ghazal in NW Jordan, the Akrotiri-Aetokremnos Rock shelter on the island of Cyprus, in Egypt and Afghanistan, and as a research associate on the Watson Brake in northern Louisiana (this is often cited as the earliest mound site in North America).

From the Library, etc.

Related to the OGMS Oct. 6 meeting topic, those interested in further reading and information might consider — —

"Origin; A Genetic History of the Americans" by Jennifer Raff. Ms. Raff is an associate professor of Anthropology at KU and has a dual PhD in Anthropology and Genetics. The book, published in Feb. 2022, shot to the bestseller listing when The New York Times gave it a very positive sweeping summary review, followed by interviews on NPR. The Harvard Book Store described her as a "celebrated anthropologist, [ScienceNews.org](https://www.sciencenews.org) praised the book's clear, nontechnical language and the Times revisited "Origin" in a book review podcast and as the lead item in its Feb. 17 "Inside the Best-Seller List" compendium. (In the book, Ms. Raff cites Dr. Rolfe Mandel assistance in explaining Geoarchaeology, and his mentoring her efforts).

"The Neanderthals Rediscovered: How Modern Science Is Rewriting Their Story", Dimitra Papagianni & Michael A. Morse; revised and updated 2015, reprinted 2018.

"The World Without Us", Alan Weisman; 2007.

"Ohio's Prehistoric Peoples", Martha Potter Otto, The Ohio Historical Society, 1980.

"An Introduction to the Calico Early Man Site Lithic Assemblage", Ruth DeEtte Simpson, 1999

Also, speaking of early man in the Americas (but not quite as early as Dr. Mandel's topic) please be aware of the "Maya: The Great Jaguar Rises" exhibit currently open in Union Station.

Mini-Miner

OGMS members all receive monthly the Mini-Miners publication. While this is primarily for young rock hounds, it is also a teaching and learning opportunity for adults. Evidence of this is apparent when trying to answer the quiz usually included near the end of each issue. Many, youth and adults, comment that they are unable to correctly answer each question in spite of the answers usually being in the preceding text of each issue.

In the current issue, Diamond Dan, the author, includes definitions related to "Mineral Oddities", however in doing so he defines Acicular twice, while not defining Arborescent (which by the Dictionary of Geological Terms is defined as dendritic, or a mineral that has crystallized in a branching pattern; pertaining to a dendrite).

Notes Concerning the Upcoming Topeka Gem and Mineral Show

Regarding the show/topic (Oceans of Kansas), it is unknown the manner that the event will represent Kansas past oceans, however for those interested, the book by Michael J. Everhart "Oceans of Kansas" (2005) will provide extensive information on the western interior sea. For local interest the book describes 1890 finds by E. P. West of two *Tylosaurus proriger* fossils (mosasaurs) in Logan County, KS (KUVF 1020 and KU VP 1029). These very same mounted fossils, on semi-permanent display from KU, are on display in the Dino Lab at the Union Station Science City. They were displayed at the entry to the 2018 "Dinosaurs Revealed" exhibit at Union Station (although mosasaurs are marine and not dinosaurs - which are terrestrial).

Elias Putnam West was a very interesting individual in the history of the Kansas City and regional area. His bio indicates he was a Lawyer, Attorney General, Militia Commander, Judge, Postmaster, Archeologist, and Paleontologist - the later at KU in the final 20 years of his life. He was self-taught in archeology (collecting on his own) and paleontology (for KU). Much of his archeology collection was purchased by the Kansas City Academy of Science in 1883 however there is no record of what happened to that collection.

WEBSITE NEWS:

We are now sending OGMS Club E-mail messages via our website. If you have not received any OGMS messages for a while, please check your SPAM/JUNK folder to see if the E-mails are in there. If so, please mark them as not SPAM so you can receive them normally. The emails are mailed from webmaster@olathegemclub.org.

We will be updating the "Members Area" password soon. An email will be sent to all current members when this update occurs.

HOLIDAY PARTY:

Holiday Party, November 17, 2022 from 5:30 PM to 8:30 PM

We're going bar-b-que for our Holiday Party serving KC Joe's delicious ribs, brisket, pulled pork, BBQ beans, Cole slaw, potato salad and rolls. Bottled water will be provided.

Cost: \$10 for adults
\$5 for ages 12-17 years
Free for 11 years and less



Payment must be made by the October 6 meeting.

This year we will host the annual holiday party on the evening of Thursday, Nov. 17 at our church meeting location - - - BUT in the large space at the bottom of the stairs (instead of in room 018).

This will be a partially catered event (see below) and participants are asked to bring deserts and/or any special side dishes you wish to share. The club will provide the meal dishes, drinks, table service, etc. and the cost share this year will be \$10/person (\$5/youth).

As in the past we will share wrapped gifts (suggested no more than \$10 each) to open and capture.

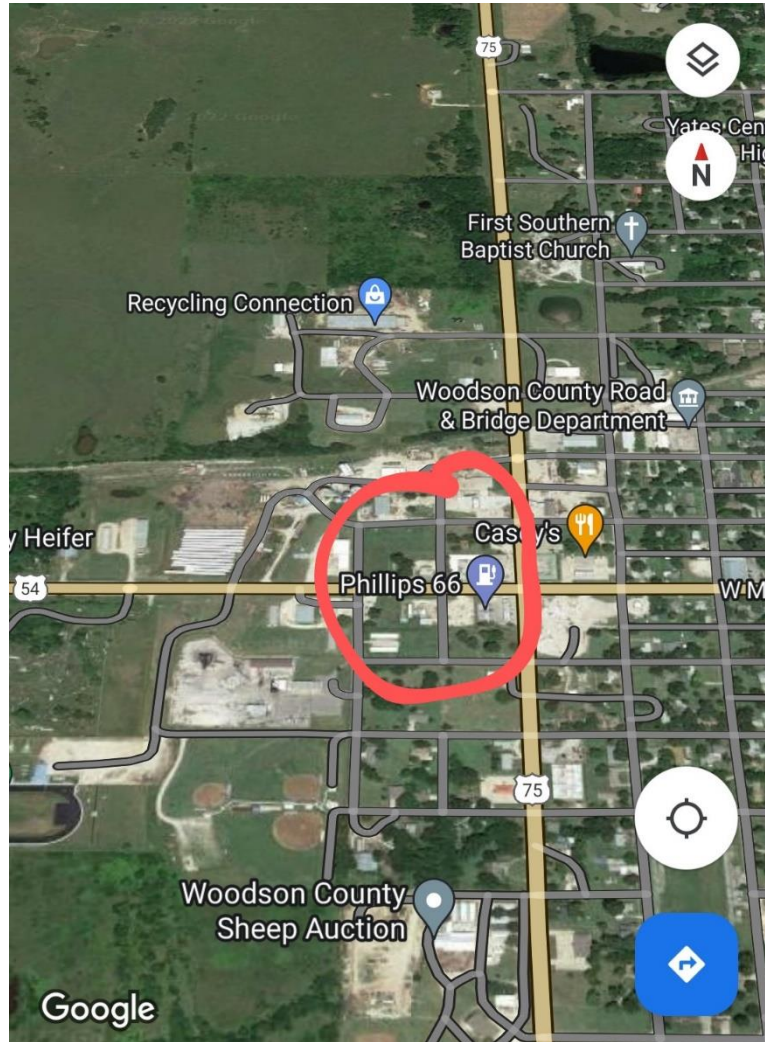
So that we have an accurate food count, those intending to participate need to sign up at our Oct. 6 club meeting, indicate who will be attending, and the dish you intend to bring.

Questions? Call Barbara at 913-492-6783

FIELD TRIPS:

The next field trip will be to Yates Center, KS on Saturday October 8th at 9:30am. We will meet at the Phillips 66 gas station at 301 S Fry St, on the corner of US-54 and US-75. We will leave from there at 10am after everyone shows up and signs in to head to the Round Mound. This place has fossils. Let me know by Wednesday, October 5th if you will be coming.

There are other locations out around the area so depending on those who show up if you want to go to another location, we can but it will be a 30-minute drive for the other good spot I'm going to.



If you have any ideas for a field trip, please let me know by email or text hartman.12345@hotmail.com or 785-380-6016. Leslie.

WESTWARD HO

The grand adventure for Scott and me this summer was a drive to Selah, WA. Along the way we scheduled three important rock collecting stops. First was Glass Buttes, OR just off US-20. We only collected on one of the roads that bisect this area. The quest was for mahogany obsidian. We found bags of small pieces and lots more.



The next day we drove out US-97 to Richardson's Rock Ranch, northeast of Madras. He has tons of rocks. It was like shopping in a candy store. We didn't spend any time checking out the store where there are shelves piled high with finished pieces. Instead, we shopped the yard and packed the car with tiger eye, Sodalite, jade, and ruby-zoisite.



I did say 'tons', didn't I?

Our next quest was the Polka Dot Agate Mine near Ashwood. This is one of the sites in OR for thunder eggs. Digging is free and they charge \$2 per pound for whatever you collect and want to take home. They even have tools you can borrow.



Richardson use to have a digging site but its closed now. Instead, he has thunder eggs for sale. The one thing we learned; thunder eggs are different for each collection area. If you ever have the opportunity to travel in OR, I definitely endorse the places we collected.
Barbara Crompton

NEWS, VIEWS AND REVIEWS

Personal news

Those familiar with the gem and mineral shows over the years held in Kansas City will probably recognize the long-time vendor Westside Agates from Ames, Iowa. Sadly, we have learned the most gracious and friendly proprietors, Ellis and Sandy Voss, both passed away in Sept., within days of each other.

OGMS member Jeannie Feimster and her husband Jim are reportedly going to visit Egypt this fall. We wish them a safe journey and will look forward to a full and rock and gem related report upon their return.

Quartz (xl) quip

Quartz is found in numerous "varieties" and "habits", but in fact it exists in just two "forms" -- alpha and beta. It turns out that it can change from alpha to beta form abruptly at 573 degrees C (1,063 degrees F), and this transformation results in a dramatic change in volume. This has to do with how the silica tetrahedrons, of which quartz is composed, is arranged (corner connections with each oxygen atom). ("Quartz", Harold Dibble, 2002).

UPCOMING EVENTS

Upcoming Events and Shows

If you have interest in any of the shows listed here, please check the status of shows and promoter notices.

Sep. 30 – Oct. 1, 2022 – Joplin History & Mineral Museum - Rock-a-thon

Oct. 1, 2022 – McPherson Gem and Mineral “Mini Rock Sale”, McPherson County 4-H Building

Oct. 6, 2022 – OGMS monthly club meeting: 6:45 - 8:45 PM

Oct. 8 - 9, 2022 – Topeka Gem and Mineral Show - Oceans of Kansas, Kansas Expo Centre AG Hall; 17th and Topeka Blvd, Topeka, KS 66609

Oct. 15 - 16, 2022 – Des Moines 2022 Gem, Jewelry, Mineral & Fossil Show; Iowa State Fairgrounds

Oct. 21 - 23, 2022 – National Fossil Exposition XLIII; Springfield, IL; Orr Building; IL State Fairgrounds

Oct. 29 - 30, 2022 – 2022 OK Mineral and Gem Society Show

Nov. 4 - 6, 2022 – **KC G&M Show; KCI Expo Hall**

Nov. 10, 2022 – 54th Geotechnical Conference at KU;
ceae.ku.edu/geotechnical-engineering-conference

Nov. 12 - 13, 2022 – Omaha G&M Show; UNO Scott Conference Center

Nov 17, 2022 – OGMS HOLIDAY PARTY: 5:30PM - 8:30 PM

Jan 5, 2023 – OGMS monthly club meeting: 6:45 - 8:45 PM

Mar. 10 - 12, 2023; – **KC G&M Show; KCI Expo Hall**